

Leonardo-300 Leonardo-300V

/



Cardi s.r.l.
via Leonardo da Vinci, 21, I-24030 Pontida (BG), Italy
Tel. +39 035 795029
Fax +39 035 796190
www.cardi.biz



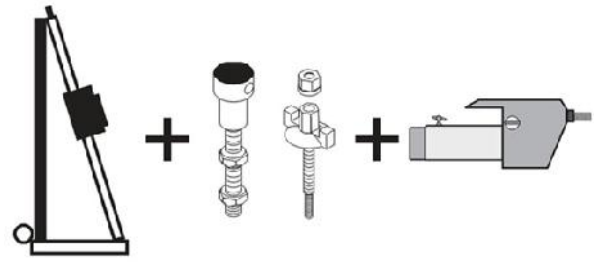
ADR
TECH
« - »
/ : (495) 150-0822
www.adr-t.ru
E-mail: info@adr-t.ru

7/8

1	3
2	3
3	3
4	3
5	4
6	4
6.1	4
6.2	5
7	6
8	6
9	7
10	7
11	7
12	8

1

Leonardo-300 Leonardo-300V



2

3

	Leonardo-300	Leonardo-300V
	50 50 1000	
	45	
MAX	702	
	440 260 1110	440 260 1140
	19,3	22,8
	6-	8
MAX	300	
	3500	
	220	

4

Cardi s.r.l.

- ✓ UNI EN ISO 12100 part 1 and part 2
- ✓ EN 12348
- ✓ machinery directive 2006 / 42 / EC

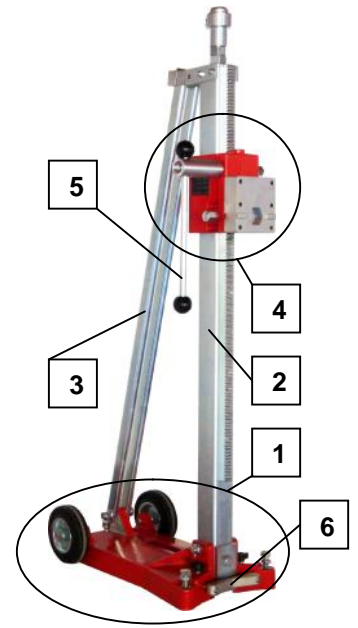
- ✓ CE,
- ✓ (

CE.

Ezio Cattaneo *E. Cattaneo*

5

- (1), (. .6).
- (2)
- (3), (. .9).
- (4) (. .8).
- (5),
- (6),



6



6.1

Leonardo-300

Leonardo-300V

()



. .),

160

210



(,

-
-
-
-

12.

6.2

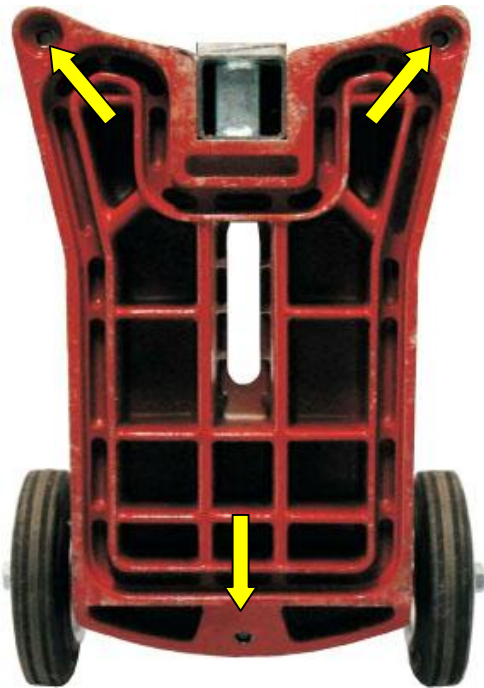
Leonardo-300V



-
-
-

Ø250 ;

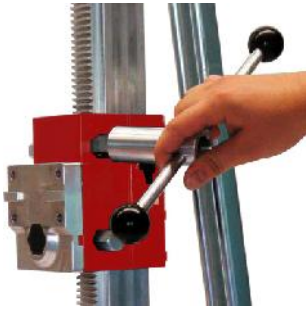
3500 ;



0,8

0,8

7

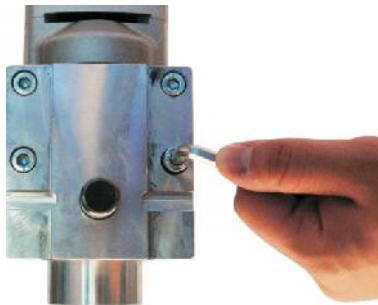


8

Cardi.

Leonardo-300

Leonardo-300V



8.



Leonardo-300

Leonardo-300V

Ø60 (),



Leonardo-300V () -

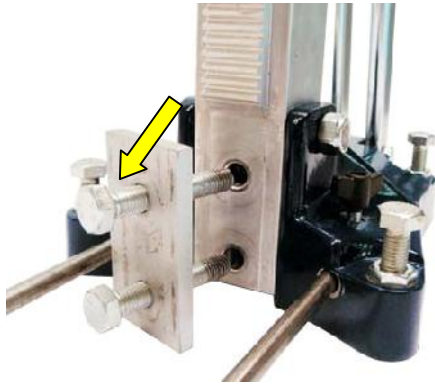
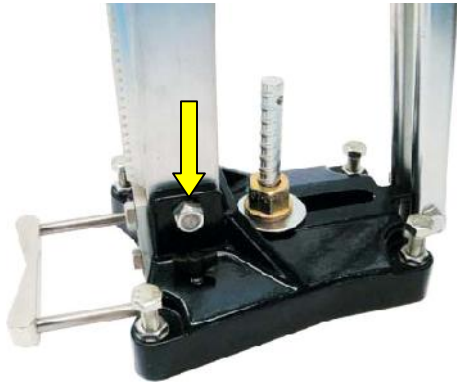
Leonardo-300

4-

8



9



-
-
-
-
-
-

2

10

1

11

(,)

Cardi.

Cardi,

12

1. 24

2.

3.

3.1. Cardi. Cardi

3.2. 6

3.3.

3.4.

4.

5.

5.1. .3.1.,

5.2.

5.3.

5.4.

5.5.

5.6.

5.7.

6.

7.

.1.